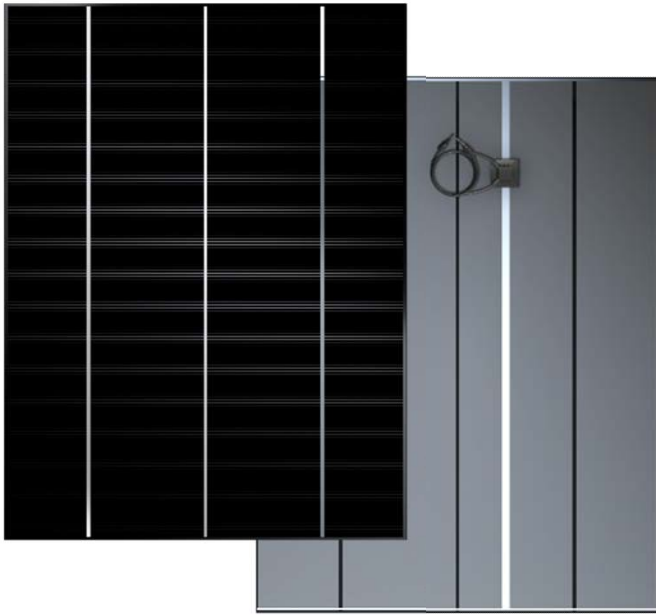


Marble series COM-M1 CdTe Power Glass



Product Features



High power generation

Under the same installed capacity, the power generation is more than other optoelectronic technologies



Low temperature coefficient

Less affected by temperature. With the increase of temperature, the power attenuation is smaller than other PV products



High security

Low hot spot effect, Strong resistance to occlusion, high safety



Adapt to harsh environments

It can be installed and used in extreme conditions such as mountains, deserts, and coastal defenses



Perfect integration with architecture

It can be customized from dimensions, colors, patterns, light transmission, etc., and is suitable for various styles of buildings



Environmental protection and safety

Energy saving and emission reduction, green building materials that can create value

Product Certification



- IEC/EN61215 IEC/EN61730
- GB/T29551
- JGJ102
- Fireproof Class A

About CNBM (Chengdu)

Chengdu CNBM Optoelectronic Materials Co., Ltd. is the leading company of the thin-film new energy industry, and the subsidiary of the world's top 500 China National Building Materials Group. CNBM is engaged in the R&D and manufacture of Cadmium telluride power generation glass, and the design and installation of photovoltaic systems. CNBM is committed to becoming the world's leading professional provider of cadmium telluride power generation glass solutions.

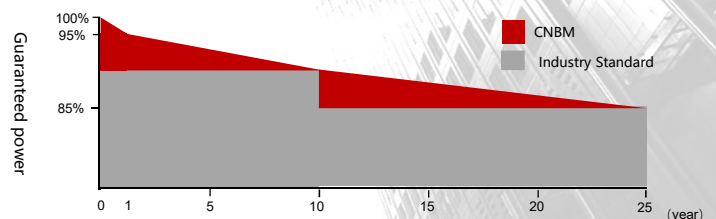
Product Warranty

10-
year

Product
Warranty

25-
year

Linear Power
Output
Guarantee



CNBM (Chengdu)

www.cnbmcoe.com

028-85673548 18180539840 18180532940

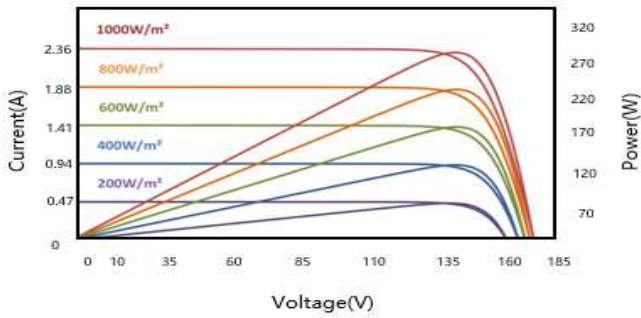


成都中建材

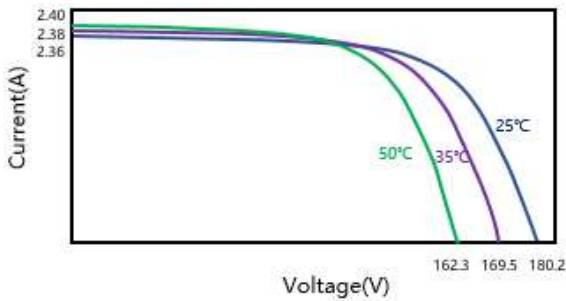
中国建材

IV Curves

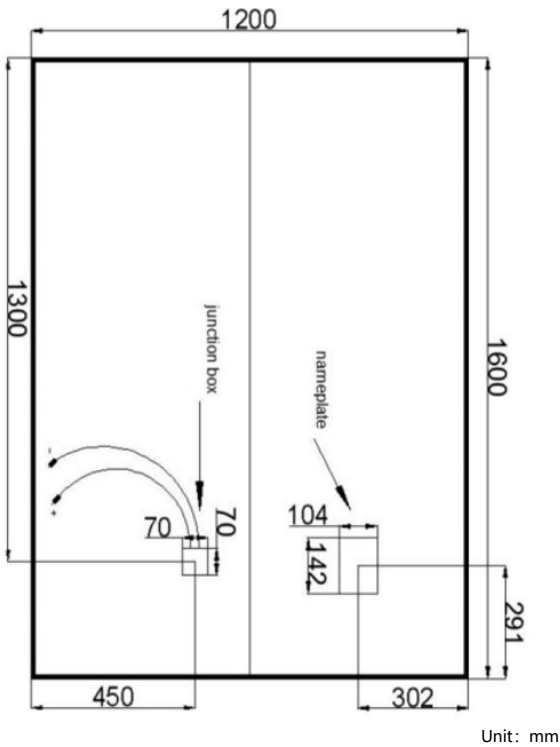
COM-M1-280W at different light intensities



COM-M1-280W at different temperatures



Engineering Drawing



Electrical Parameters (STC)

Number	COM-M1-290W	COM-M1-280W	COM-M1-270W	COM-M1-260W	COM-M1-250W	
Nominal Power	$P_{MAX}(W)$	290	280	270	260	250
Power Tolerance	(%)	±3	±3	±3	±3	±3
Voltage at P_{MAX}	$V_{mpp}(V)$	137.2	133.1	129.3	127.5	125.0
Current at P_{MAX}	$I_{mpp}(A)$	2.12	2.11	2.09	2.04	2.00
Open Circuit Voltage	$V_{oc}(V)$	179.0	178.0	173.8	171.4	167
Short Circuit Current	$I_{sc}(A)$	2.39	2.38	2.38	2.31	2.28

STC (standard test conditions): irradiance 1000W/m², battery temperature 25°C, air quality AM1.5

Temperature Characteristics

NMOT (Nominal Module Operating Temperature)	42.3±2°C
Temperature Coefficient of P_{MAX}	-0.189%/°C
Temperature Coefficient of V_{oc}	-0.396%/°C
Temperature Coefficient of I_{sc}	+0.061%/°C

Operating Conditions

Maximum System Voltage	1000V/1500V
Limiting Reverse Current	3.5A
Operating Temperature Range	-40°C ~ +85°C
Load Rating(wind/snow)	2400Pa/2400Pa
Hail Test	Passed
Protection Class	IP67

Mechanical Data

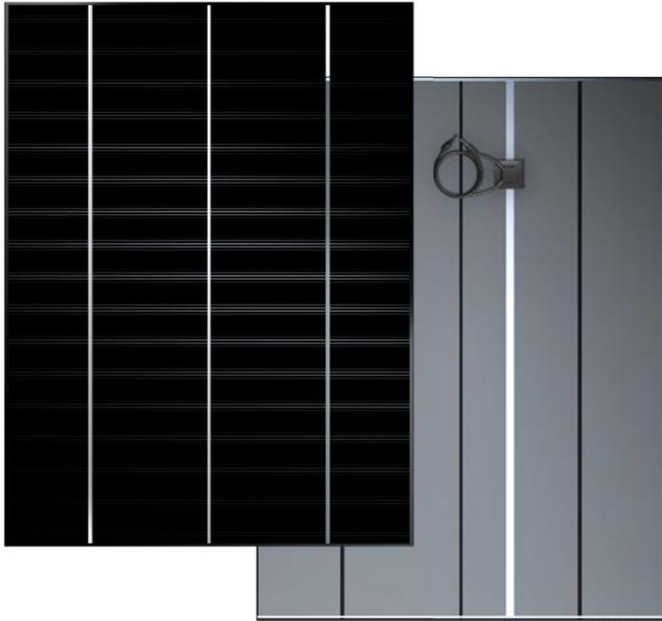
Module Dimension	1600*1200*26.9mm
Thickness	6.9mm
Thickness with Junction Box	26.9mm
Area	1.92m ²
Module Weight	30kg
Leadwire	2.5mm ² , 1000mm
Front Glass	3.2mm ultra white float glass
Back Glass	3.2mm semi-tempered glass
Cell Type	Thin film CdTe semiconductor
Encapsulation	POE/EVA
Number of Cells	215*4
Packaging	30pcs/tray

- Please strictly abide by the user manual for product installation.
- Chengdu CNBM reserves the right of final explanation for technical changes and specific explanations of test conditions.



成都中建材

Marble series COM-M2 CdTe Power Glass



Product Features



High power generation

Under the same installed capacity, the power generation is more than other optoelectronic technologies



Low temperature coefficient

Less affected by temperature. With the increase of temperature, the power attenuation is smaller than other PV products



High security

Low hot spot effect, Strong resistance to occlusion, high safety



Adapt to harsh environments

It can be installed and used in extreme conditions such as mountains, deserts, and coastal defenses



Perfect integration with architecture

It can be customized from dimensions, colors, patterns, light transmission, etc., and is suitable for various styles of buildings



Environmental protection and safety

Energy saving and emission reduction, green building materials that can create value

Product Certification



- IEC/EN61215 IEC/EN61730
- GB/T29551
- JGJ102
- Fireproof Class A

About CNBM (Chengdu)

Chengdu CNBM Optoelectronic Materials Co., Ltd. is the leading company of the thin-film new energy industry, and the subsidiary of the world's top 500 China National Building Materials Group. CNBM is engaged in the R&D and manufacture of Cadmium telluride power generation glass, and the design and installation of photovoltaic systems. CNBM is committed to becoming the world's leading professional provider of cadmium telluride power generation glass solutions.

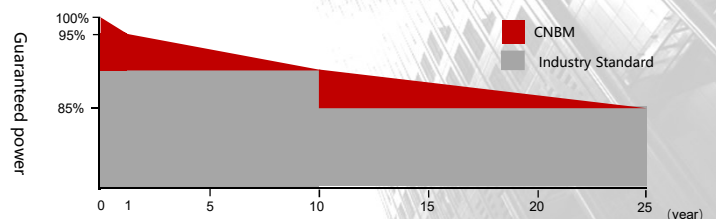
Product Warranty

10-year

Product
Warranty

25-year

Linear Power
Output
Guarantee



CNBM (Chengdu)

www.cnbmcoe.com

028-85673548 18180539840 18180532940

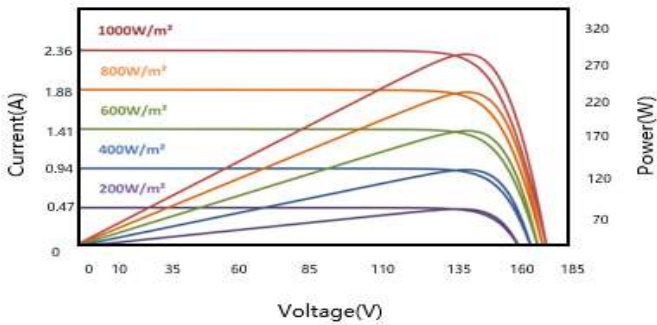


中国建材

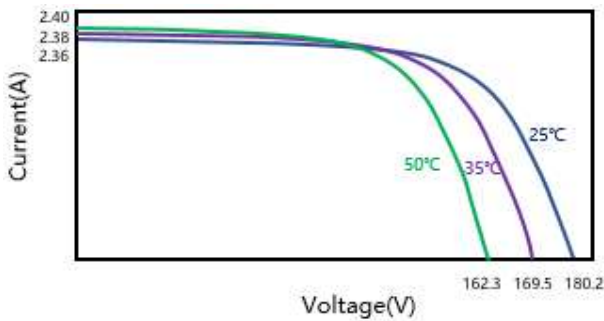
成都中建材

IV Curves

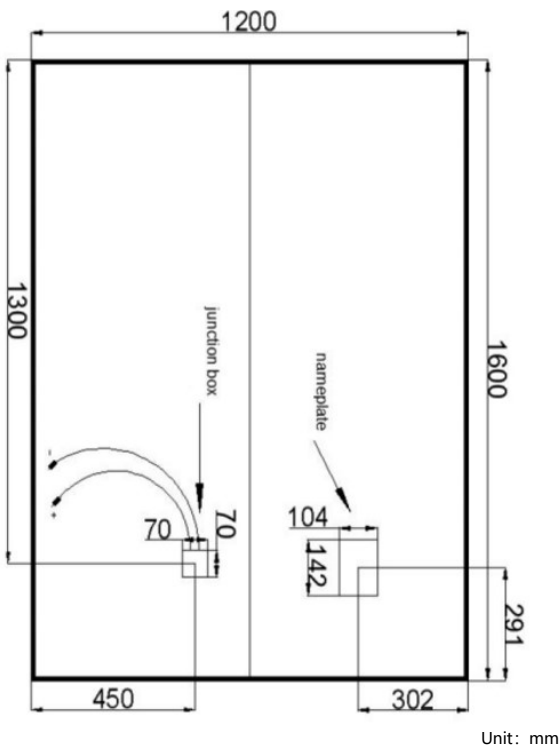
COM-M2-280W at different light intensities



COM-M2-280W at different temperatures



Engineering Drawing



Electrical Parameters (STC)

Number		COM-M2-290W	COM-M2-280W	COM-M2-270W	COM-M2-260W	COM-M2-250W
Nominal Power	$P_{MAX}(W)$	290	280	270	260	250
Power Tolerance	(%)	±3	±3	±3	±3	±3
Voltage at P_{MAX}	$V_{mpp}(V)$	137.2	133.1	129.3	127.5	125.0
Current at P_{MAX}	$I_{mpp}(A)$	2.12	2.11	2.09	2.04	2.00
Open Circuit Voltage	$V_{oc}(V)$	179.0	178.0	173.8	171.4	167
Short Circuit Current	$I_{sc}(A)$	2.39	2.38	2.38	2.31	2.28

STC (standard test conditions): irradiance 1000W/m², battery temperature 25°C, air quality AM1.5

Temperature Characteristics

NMOT (Nominal Module Operating Temperature)	42.3±2°C
Temperature Coefficient of P_{MAX}	-0.189%/°C
Temperature Coefficient of V_{oc}	-0.396%/°C
Temperature Coefficient of I_{sc}	+0.061%/°C

Operating Conditions

Maximum System Voltage	1000V/1500V
Limiting Reverse Current	3.5A
Operating Temperature Range	-40°C~+85°C
Load Rating(Wind/Snow)	2400Pa/2400Pa
Hail Test	Passed
Protection Class	IP67

Mechanical Data

Module Dimension	1600*1200*25.9mm
Thickness	5.9mm
Thickness with Junction Box	25.9mm
Area	1.92m ²
Module Weight	27kg
Leadwire	2.5mm ² , 1000mm
Front Glass	3.2mm ultra white float glass
Back Glass	2.2mm semi-tempered glass
Cell Type	Thin film CdTe semiconductor
Encapsulation	POE/EVA
Number of Cells	215*4
Packaging	30pcs/tray

- Please strictly abide by the user manual for product installation.
- Chengdu CNBM reserves the right of final explanation for technical changes and specific explanations of test conditions.



成都中建材

中国建材